



BLUE  
STONE

amante  
CERAMIC TILES



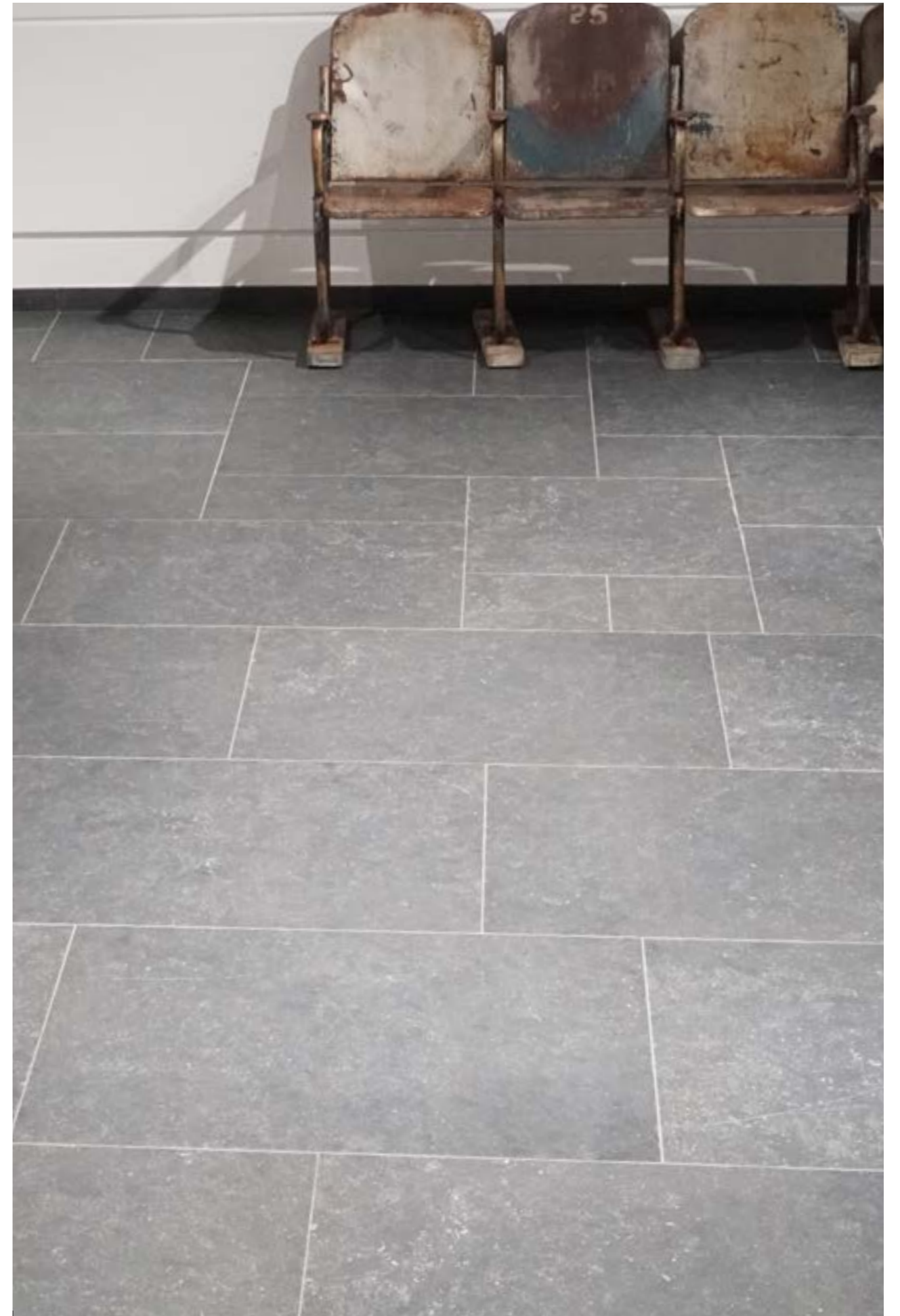
60x90cm rect. | Modular rect.



Modular rect.



Modular rect.

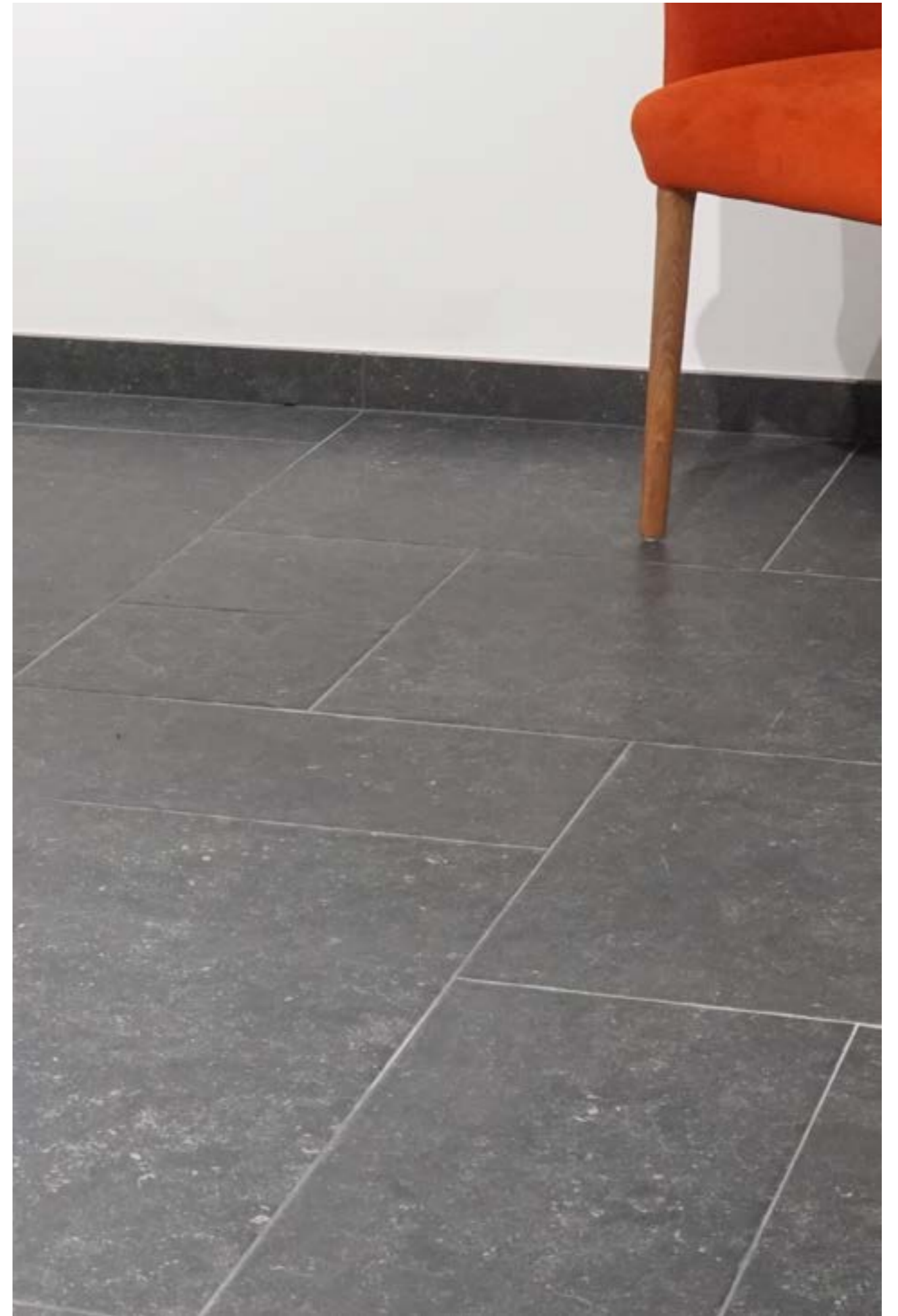


60x90cm rect. | Modular rect.





Modular rect.



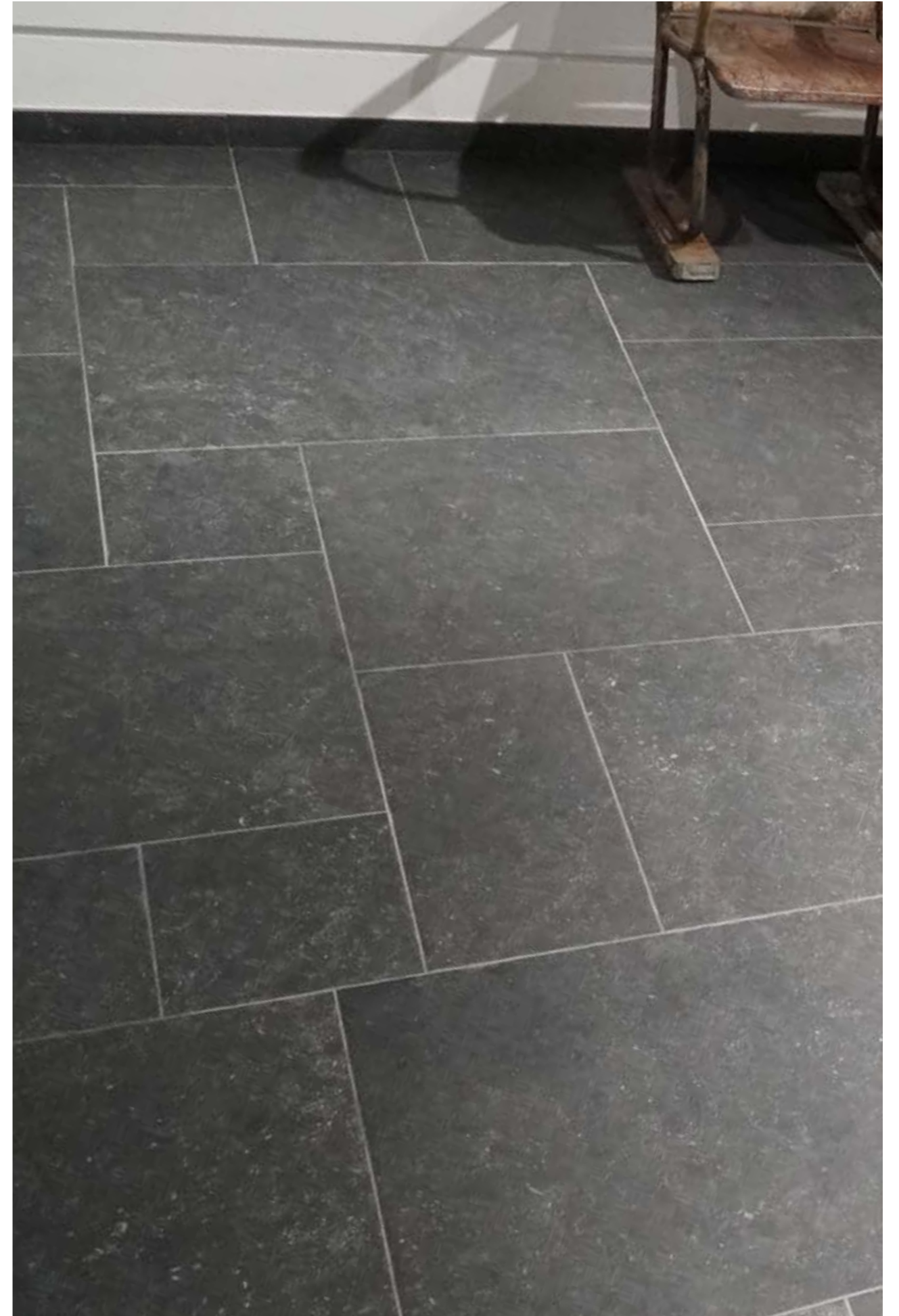
Modular rect.



60x90cm rect. | Modular rect.



60x90cm rect. | Modular rect.



Modular rect.



# Size



59,7x89,65x1 cm | 24"x36"x0,4"

**CEBLS060002**

*11 FACES*



59,7x59,7x1 cm | 24"x24"x0,4"

**CEBLS060001**

*22 FACES*



29,75x59,7x1 cm

12"x24"x0,4"

**CEBLS030002**

*44 FACES*



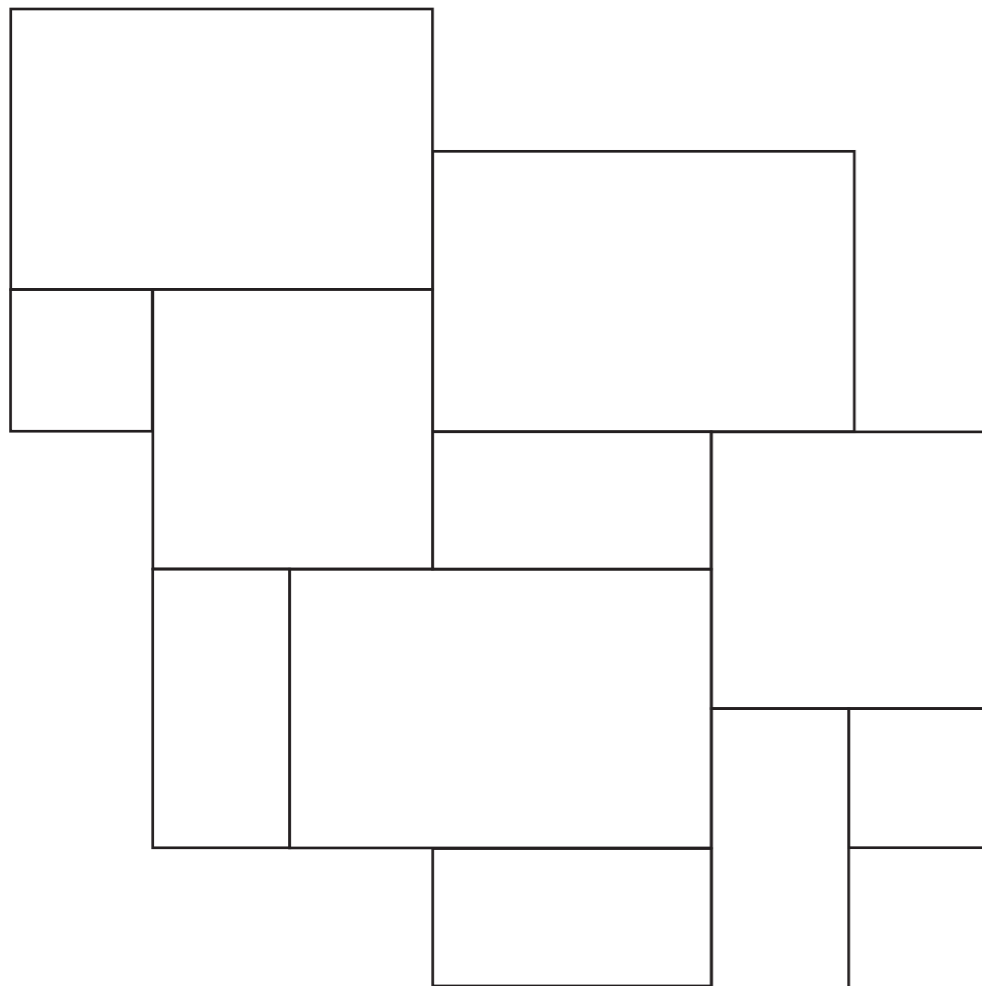
29,75x29,75 x1 cm  
12"x12"x0,4"

**CEBLS030001**

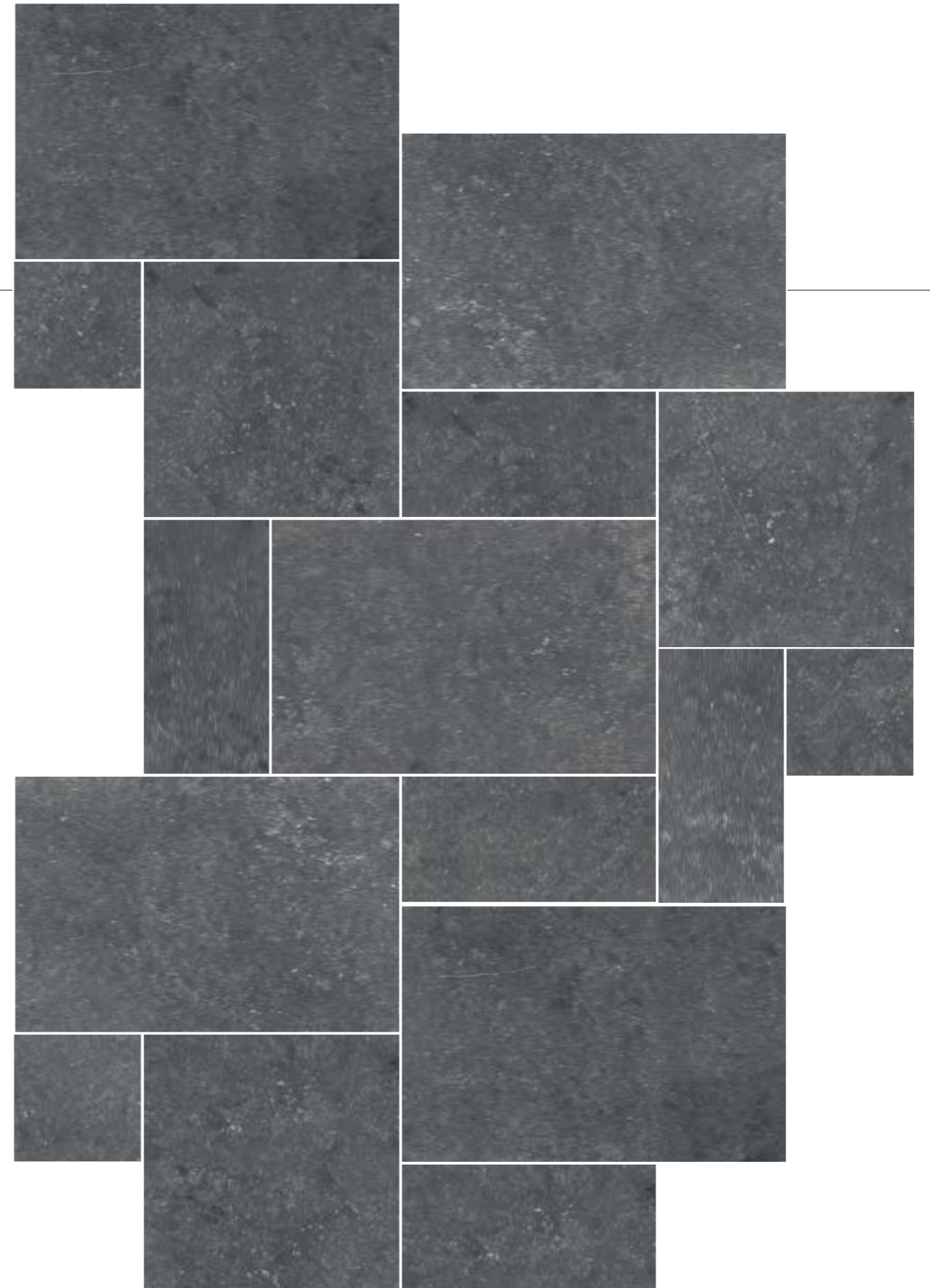
*88 FACES*



# Modular



50% size: 59,7x89,65x1 cm | 24"x36"x0,4"  
22,22% size: 59,7x59,7x1 cm | 24"x24"x0,4"  
22,22% size: 29,75x59,7x1 cm | 12"x24"x0,4"  
5,56% size: 29,75x29,75 x1cm | 12"x12"x0,4"



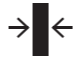










# Info

## Packing

Comply with UNI EN 14411 All. G Bla Group



Size	Pcs / Box	Sqmt / Box	Kgs / Box	Boxes / Pallet	Sqmt / Pallet	Kgs / Pallet
59,7x89,65x1 cm 24"x36"x0,4"	2	1,08	24,3	48	51,84	1186,4
59,7x59,7x1 cm 24"x24"x0,4"	3	1,08	23,55	40	43,2	962
29,75x59,7x1 cm 12"x24"x0,4"	6	1,08	23,55	40	43,2	962
29,75x29,75 x1 cm 12"x12"x0,4"	6	0,54	12	96	51,84	1172

TECHNICAL CHARACTERISTICS	NORM	VALUES REQUIRED	VALUE
GLAZED Porcelain Stoneware Comply with UNI EN 14411 All. G Bla Group			
	Sizes	ISO 10545-2	Lenght and width $\pm 0,6\%$ Thickness $\pm 0,5\%$ Linearity $\pm 0,5\%$ Wedging $\pm 0,6\%$ Warpage $\pm 0,5\%$
	Water absorption	ISO 10545-3	$\leq 0,5\%$
	Breaking strenght	ISO 10545-4	min. 35 N/ mm2
	Resistance to acid	ISO 10545-13	Class GB min. GLB min. GHB min.
	Resistance against abrasion (PEI)	ISO 10545-7	Abrasion class from I to V
	Frost resistance	ISO 10545-12	Frost proof
	Static coefficient of friction	DIN 51130 DCOF DIN 51097	$\geq R9$ $\geq 0.42$
	Mohs surface hardness	UNI EN 101	$\geq 5$
	Crazing to staining	ISO 10545-14	$\geq 3$
	Temperature changes	ISO 10545-9	-
	Coefficient of linear thermal expansion	ISO 10545-8	$\alpha \leq 7 \times 10^{-6} / ^\circ\text{C}$



amante  
CERAMIC TILES

**DESIGNED & PRODUCED  
IN ITALY**